



visit our website

CUSTOMER BROCHURE



# M-Series Transmitter

.....



.....

[www.juukoitaly.it](http://www.juukoitaly.it)

---

<b>M-Series Features</b>	1
<b>Black Box</b>	2
<b>Automatic Channel Switching (ACS)</b>	3
<b>Multi-control System</b>	3
<b>Zero-G Safety</b>	4
<b>Roll-over Protection</b>	4



---

<b>Qi Wireless Charging Compatible</b>	5
<b>MyKey: Always in Safe Hands</b>	6
<b>Data Feedback</b>	7
<b>My Drive, My Secretary</b>	7
<b>Technical Data</b>	8
<b>Configurations</b>	9
<b>Applications</b>	10





### M-Series Features

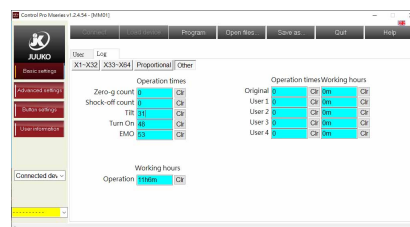
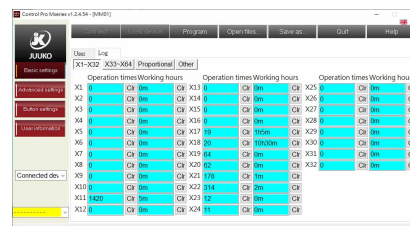
- Independent LEDs, indicate the status of the battery
- Activation of the transmitter is protected by an electronic key-code and an auto shut-off option which is programmable
- The system automatically change to another frequency in the presence of radio interference
- Eco power management system. Save on batteries
- It can receive and display via 12 LEDs signals coming from the receiver (relay action feedback)
- Mushrooms type EMO button
- Internal BootLoader, up firmware to the date by using computer
- Qi wireless charging

### Black Box

#### Track your crane or machine usage

With JUUKO Black Box function, you can always collect the usage data of both transmitter and receiver. This function is good for the hoist service and maintenance work, and also for those companies who provide lease or rent out service.

It is more than simple to see the usage data of both Transmitter and Receiver just by connect-ing the transmitter to the JUUKO's "Control pro" configuration software.



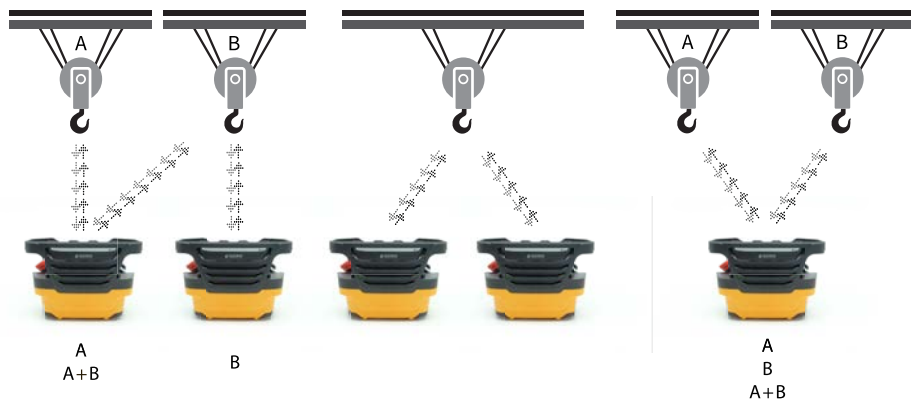
### Automatic Channel Switching (ACS)

A system comes standard with a primary working frequency and a secondary working frequency. Automatic Channel Switching (ACS) allows continuous operation free from interference for the user. When radio interference occurs during normal operation, the radio communication automatically switch to the the secondary frequency.

- Bi-directional
- Safe communication
- Uninterrupted radio link benefits smooth operation

### Multi-control System

- ① MASTER / SLAVE
- ② PITCH & CATCH
- ③ TANDEM



### Zero-G Safety

The zero-g safety function can prevent the uncontrolled output of commands in specific emergencies. The G sensor can detect if the transmitter receives a hard impact, dropped or thrown. These features can deactivate either the complete radio system or only the safety-relevant function relays.

### Roll-over Protection





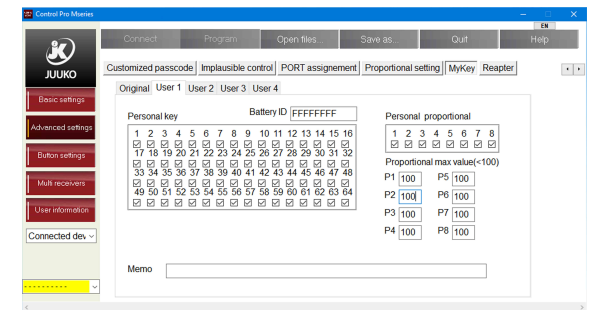
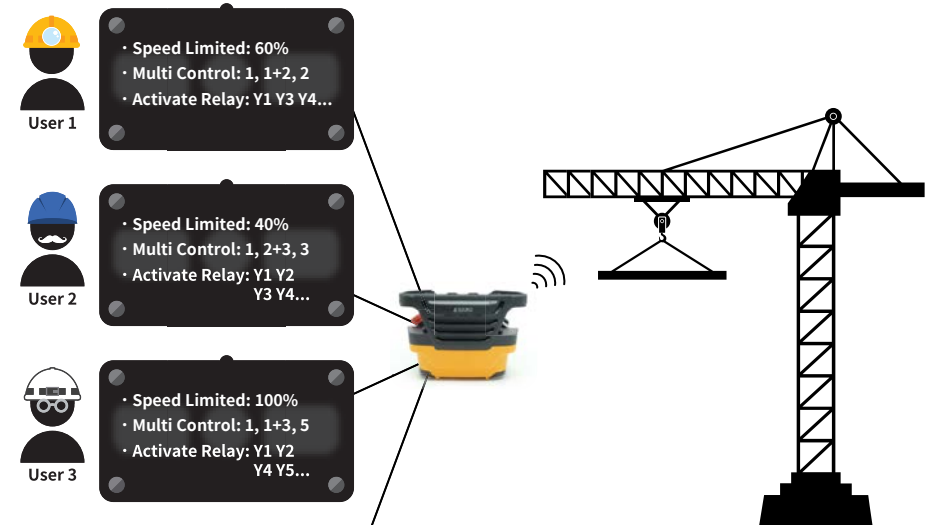
**Qi Wireless Charging Compatible**

Charged and ready to go. The main Wireless "Qi" charging standard has been adopted by hundreds of leading manufacturers and introduces the convenience of charging your device without using cables but simply by placing it on its Charging Pad.



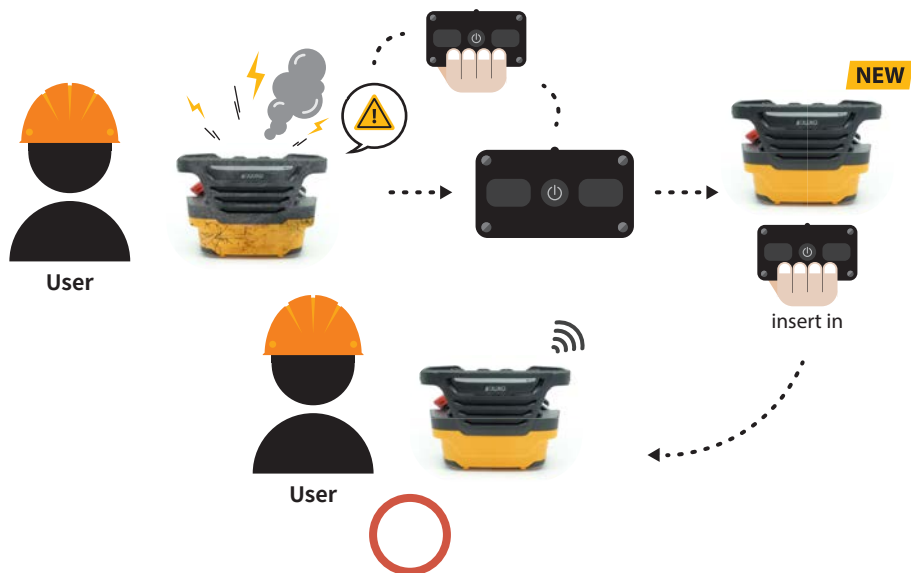
**MyKey: Always in Safe Hands**

JUUKO "MyKey" allows you to set restricted controlling mode settings in your crane or machine system that promote safe and responsible controlling. You can limit top speed, Multi-control System, transmitting power and more.



## My Drive, My Secretary

"My DRIVE" offers to the users to activate a spare transmitter in just a minute. Users simply need to take the original battery housing into the spare transmitter.



## Data Feedback

The "Data Feedback" function enables the visualization of status through 12 LEDs. These 12 LEDs are programmable to see the actual STATUS of each relay in receiver.



## Technical Data

### Layout

2\*Joystick, 6\*Paddle & Switches

### Weight (including battery)

approx. 1036g

### Dimensions

200×141.3×139mm

### Frequency band

433.0650 > 434.7650 Mhz

### Power supply

LR6(AA)1.5V / NiMH(AA)1.2V x4

### Channel space

12.5 kHz

### Stop command response time

~ 50 ms

### Number of available on/off command

max. 24 + Start and EMO

### Command response time

~ 50 ms

### Hamming distance

≥ 15

### Protection degree

IP65

### Radio communication

bi-directional

### Operating and storage temperature

(-25°C)~(+55°C) / (-40°C)~(+85°C)

### Frequency handling

Automatic and dynamic switching between 2 channels

### Housing material

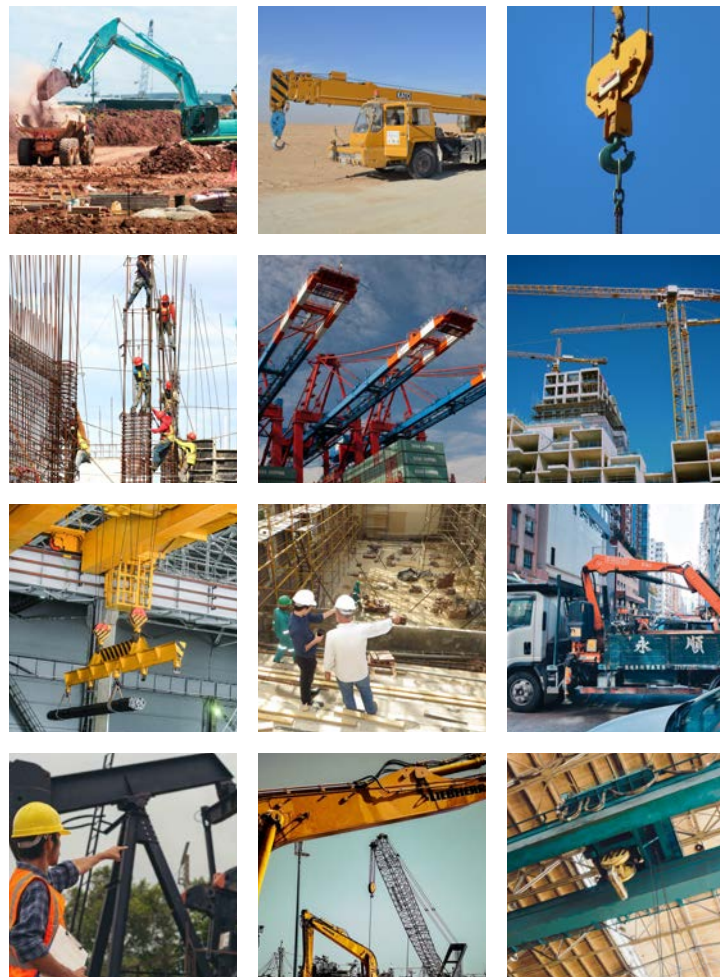
PA66 (GF30%)

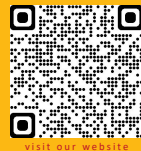


### Configurations



### Applications





visit our website



Via Don Signini 43 - 28010 -  
Briga Novarese - NO - ITALY  
c.f. p.iva - 01179050032

tel. +39 0322 93574 / 953788  
fax. +39 0322 953787  
[www.juukoitaly.it](http://www.juukoitaly.it)

# M Series